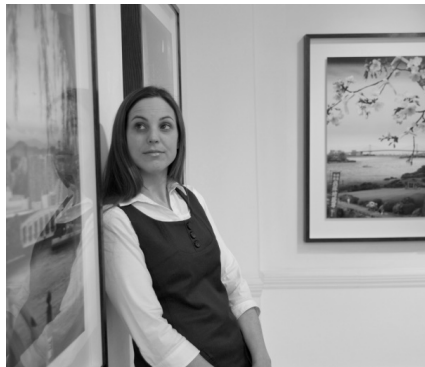




karin weber gallery
Contemporary Fine Art



Emily Allchurch

Born in 1974, Jersey, Channel Islands, Britain
Currently lives and works in London and Hastings

Education

1999

Master of Arts in Sculpture, Royal College of Art, London, UK

1996

Bachelor of Fine Art (First class), Kent Institute of Art & Design, Canterbury, UK

1993

Foundation Art & Design (Distinction), University of the West of England, Bristol, UK

Solo Exhibitions

2018

'Visions of Architectural Fancy', Sir John Soane's Museum, London, UK

'Gloria Mundi', Galerie Rothamel, Frankfurt, Germany

2017

'Then Is Now', Karin Weber Gallery, HK

'Project Space', Galerie Rothamel, Erfurt, Germany

2015

'Emily Allchurch, In the Footsteps of a Master', Djanogly Art Gallery, Nottingham, UK

'Emily Allchurch, In the Footsteps of a Master', Manchester City Art Gallery, Manchester, UK

2014

'Tokyo Story / After Hiroshige', Tokaido Hiroshige Museum, Shizuoka, Japan

2011

'Tokyo Story', Diemar Noble Photography, London, UK

'Tokyo Story', Daiwa Anglo-Japanese Foundation, London, UK

2008

'Urban Chiaroscuro', Galleria Galica, Milan, Italy

2007

'Urban Chiaroscuro', Frost and Reed Contemporary, London, UK

2006

'Emily Allchurch, A Retrospective', Frost & Reed Contemporary, London, UK

'Model City', Galica Arte Contemporanea, Milano, Italy

'Model City', Alberta College of Art & Design, Calgary, Canada

2005

'Settings', The Blue Gallery, London, UK

2003

'Setting', Galica Arte Contemporanea, Milano, Italy



karin weber gallery
Contemporary Fine Art

2002

'Light Sensitive', East 73rd Gallery, London, UK

'Exposure', with Laura White Standpoint Gallery, London, UK

'A Hill with a View', with Pamela Wells, Orleans House Gallery, Twickenham, UK

2001

'On The Horizon', Royal London Hospital, London, UK

Group Exhibitions (Selected)

2018

'Columbia Threadneedle Prize', Figurative Art Today, Mall Galleries, London

2017

'Terra Firma', James Freeman Gallery, London, UK

'Sussex Open', Towner Art Gallery, Eastbourne

'Summer Exhibition 2017', Royal Academy of Arts, London, UK

2016

'Trace Elements', James Freeman Gallery, London, UK

'Merge Visible', Mall Galleries, London, UK

'East Sussex Open', Towner Art Gallery, Eastbourne

'Fix Photo Festival', LA Noble Gallery, London, UK

2015

'Xenotopia', Gibberd Gallery, Harlow, UK

'Small is Beautiful', Flowers Gallery, New York, USA

'Summer Exhibition 2015', Royal Academy of Arts, London, UK

2014

'/seconds', Sharjah Art Foundation, Sharjah, UAE

'Edo Pop : The Graphic Impact of Japanese Prints', Singapore Tyler Print Institute, Singapore

'Sense Of Soane', School of Art Gallery, Aberystwyth University, Aberystwyth, UK

'Summer Exhibition 2014', Royal Academy of Arts, London, UK

2013

'Liminal', Camberwell College of Art, London, UK

'The Wisdom Of Escape', Nancy victor Gallery, London, UK

'Edo Pop', Japan Society Gallery, New York, USA

'Memory & Imagination : Dutch Italianate & Contemporary Landscape', Mall Galleries, London, UK

'Summer Exhibition 2013', Royal Academy of Arts, London, UK

2012

'Sense Of Soane', PM Gallery & House, London, UK

'BITE : Artists Making Prints', Mall Galleries, London, UK

2011

'Edo Pop', Minneapolis Institute of Arts, USA

2010

'Based on a True Story', ArtSway Gallery, New Forest, UK

'Perspectives', Candlestar, Hyatt Regency, London, UK

2009

'Paper City : Urban Utopias', Royal Academy of Arts, London, UK

Diemar/Noble Photography Inaugural exhibition, London, UK

2008

'Transcriptions', Sarah Myerscough Fine Art, London, UK

'Set in Stone', PM Gallery and House, London, UK

2007

'The Light Fantastic', Nicholas Metivier Gallery, Toronto, Canada

'Britain in Pictures', Museum of Film & Photography, Bradford, UK



karin weber gallery
Contemporary Fine Art

2006

'Lumiere, transparence, opacite', Nouveau Musee National de Monaco

'Making Space', Corporation of London, Spitalfields, London, UK

'Celeste Art Prize', The Well, Old Truman Brewery, Brick Lane, London, UK

'Metropolitanscape', Palazzo Cavour, Olimpiadi Program of Culture, Turin, Italy

'The Boundary, the Limit, a look at the City', Reggio Emilia, Italy

2005

'The Wrong Map' Three Colts Gallery, London

'A Digital Picture of Britain', Museum of Film & Photography, Bradford, UK

2003

'Landscape', The Blue Gallery, London, UK

'La Ciudad Radiante' Bancaja Foundation, Valencia, Spain

'Distopie Urbane', Change Studio d'Arte Contemporanea, Rome, Italy

2002

'2 in uno', Galica Arte Contempoanea, Milan, Italy

2000

'And then there was the bad weather...', LWF Projects. London & Memphis USA2000

'Tunnel Vision', Aldwych tube station, London Open House

Awards

2018

Visitors' Choice Award, Columbia Threadneedle Prize

Finalist, Columbia Threadneedle Prize

2017

British Council & Arts Council England, Artists' International Development Grant

2016

a-n Travel Bursary

2015

Grants for the Arts Award, Arts Council England, Tower of Nottingham

Art Happens, Manchester Art Gallery, Crowd funding Commission, The Art Fund

2014

Friends of the Institute Public Lecture, Minneapolis Institute of Arts

2013

Artist in Residence, Tokaido Hiroshige Museum, Shizuoka, Japan

AA2A Artist in Residence at Wimbledon College of Art

Honorary Fellow, Society of Architectural Illustration

2012

Grants for the Arts Award, Arts Council England, Sense of Soane

Diamond Jubilee Pageant Commission, States of Jersey, Channel Islands

2011

This Green and Pleasant Land, BBC 4 film celebrating British landscape painting

2007

Britain in Pictures, How we Built Britain BBC series profiling British Photographers

2006

Celeste Art Prize. Finalist

Artist in Residence, Financial Services Authority

Visiting Artist, Drawing Department, Alberta College of Art & Design, Canada

2005

A Digital Picture of Britain, BBC series profiling British Photographers

2004

Museum & Galleries Month Award: Most inspiring project. Orleans House Gallery

2003



karin weber gallery
Contemporary Fine Art

London Residencies, Footsteps in the Street, London Arts Grant
2002
A Hill with a View, Commission for Orleans House Gallery, Twickenham
2001
London Arts, Individual Artist Bursary
Year of the Artist Residency Award, Arts Council of England
2000
Year of the Artist Residency Award, Arts Council of England
Route 12:36 commission, South London Gallery

Collections

Manchester Art Gallery, UK
Financial Services Authority, London, UK
Aspen Reinsurance, London, UK
Unilever, London, UK
Schroders, London Rathbones, London, UK
Morgan Stanley, London, UK
Borough Art Collection, Twickenham, UK
States of Jersey, Channel Islands, Britain
Minneapolis Institute of Arts, USA
Nouveau Musée National de Monaco
Galleria Parmeggiani, Italy
ACAD, Canada
Tokaido Hiroshige Museum, Japan
Fidelity, Tokyo, Japan

Publications (Selected)

ZARCH, Journal of interdisciplinary studies in Architecture and Urbanism, Issue #9. *Arquitectura, mirada y cultura visual* (Architecture, glance, and visual culture), December 2017
Hong Kong Perspective: Architecture / Design / People, November 2017, p.16-17
The Photographer, 2016, Issue 2, pp.16-23
Photomonitor - August 2015, In the Footsteps of a Master, Review by Camilla Brown
Manchester Art Gallery 2015, Catalogue, Emily Allchurch, In the Footsteps of a Master
Ashgate 2014, *The Architectural Capriccio: Memory, Fantasy & Invention* ISBN: 987-1-409-3191-6
Impressions (The Journal of the Japanese Art Society of America), Issue: 34, 2013 pp.122-139
Photo+, South Korea, Issue 12, Winter 2012, Tokyo Story, pp. 34-41
Sunday Telegraph Seven Magazine, 9th September 2012
FT weekend, 21st & 22nd Jan 2012, London Art Fair Review, Francis Hodgson, Life & Arts p.11
The Sunday Times Magazine, 6 March 2011, p.42
Printmaker Today, Winter Issue 2010, Front cover
Digital Photographer, Issue 102, 2010, Text by Dylan Baker, pp.74-77
Frieze, Issue 134, October 2010, Text by David Trigg, pp.246-247
Fotografi, Winter 2008 (Norway) Text by Michael Diemar pp. 28-35
Portfolio, Issue 47, June 2008, Text by Nigel Warburton, pp 50-55
FMR, White Edition, Classical 2008 (Italy), Text by Walter Guadagnini, pp 34-45
Printmaking Today, Vol 17 No.2 Summer 2008, Anne Desmet Old Masters Reborn pp.10 & 11
Digital Photography Masterclass, Tom Ang, Dorling Kindersley Ltd, May 2008, pp.332-337
Arte, May 2008, Emily Allchurch *Architettura Ideali* by Nicoletta Cobolli Gigli, pp.120-125
Building Design, 4 April 2008, Mean Streets by Gareth Gardner, p.16
Design Week, Volume 23 / Number 13, 27 March 2008, Stone Cold by Clare Dowdy, Back Cover
BBC Radio London, Robert Elms show, Interview for Set in Stone, 24th March 2008
Guardian Guide, 22-28 March 2008, Exhibitions Previews p.37



karin weber gallery
Contemporary Fine Art

Arts Industry, 7 March 2008, Issue 204, Front Cover

Ag Magazine, Number 50, pp.10-11, Winter 2008

Blueprint, Paper City Commission, p.82, January 2008

/Seconds 7 : sci-fi, utopia, roadside picnics, December 2007

Contemporary, Issue #91, Special issue on digital art, David Shariatmadari, 2007

Arte, June 2006, Emily Allchurch Sfida ai Capolavori di Nicoletta Cobolli Gigli, pp84-89